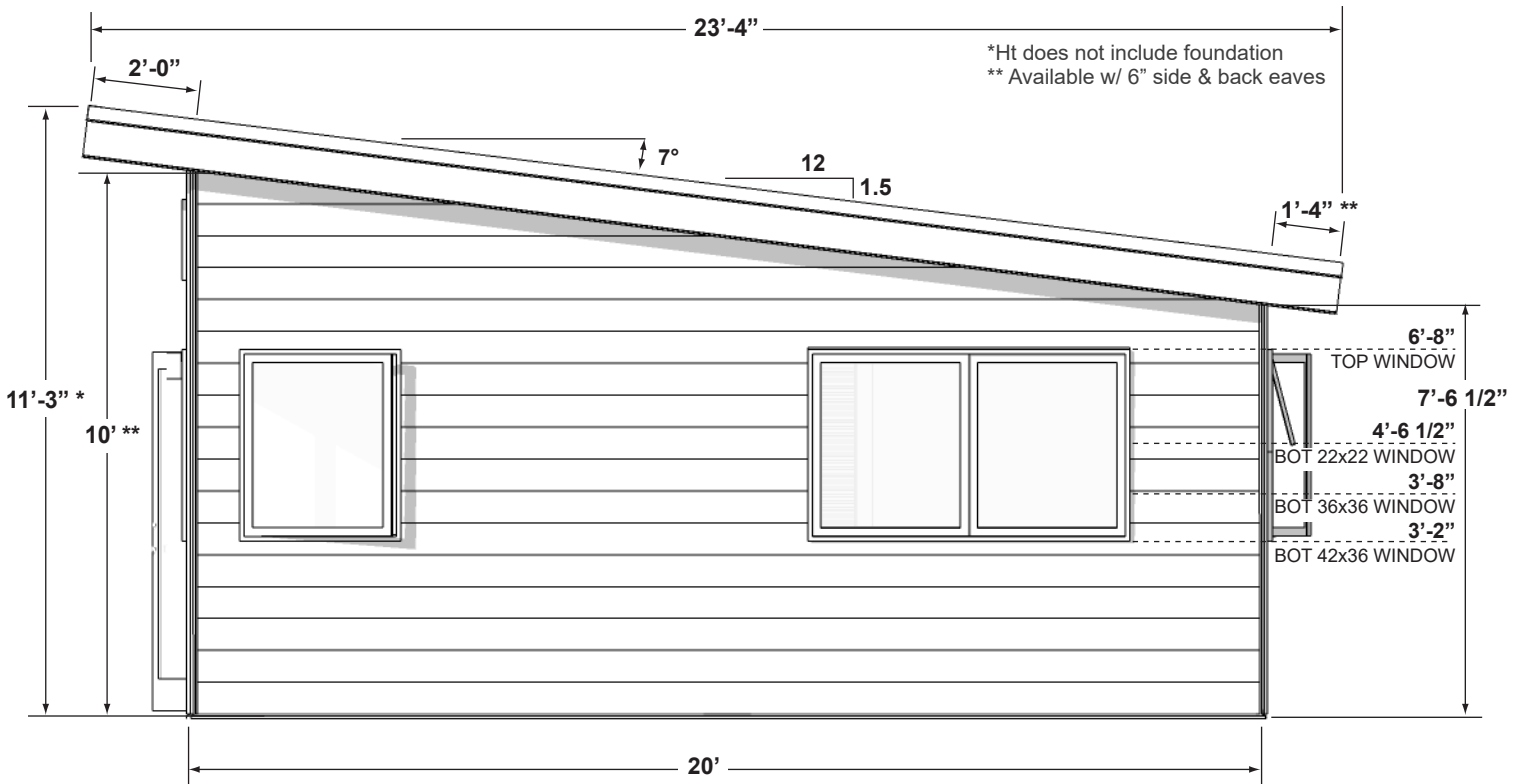
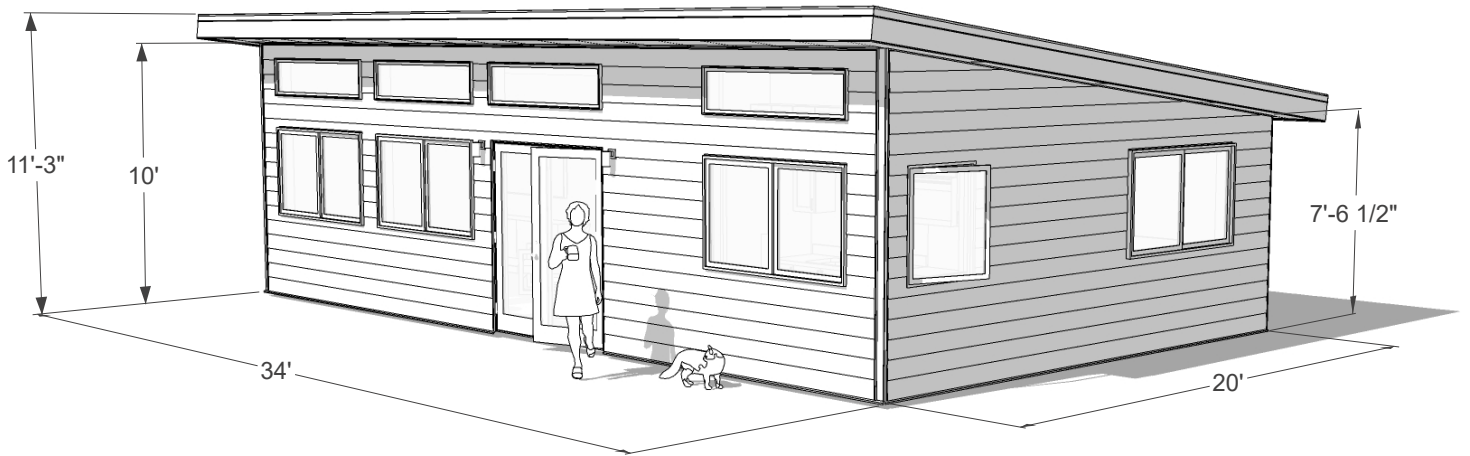


NOTE: All layouts available mirrored (left-right)


SUMMIT SERIES - ROOF UPGRADES
EAVE LENGTHS:

 FRONT = 24"
 SIDE = 16"
 BACK = 6"

SHORTENED BACK EAVES
 RECOMMENDED FOR PLACEMENT NEAR REAR SET-BACK

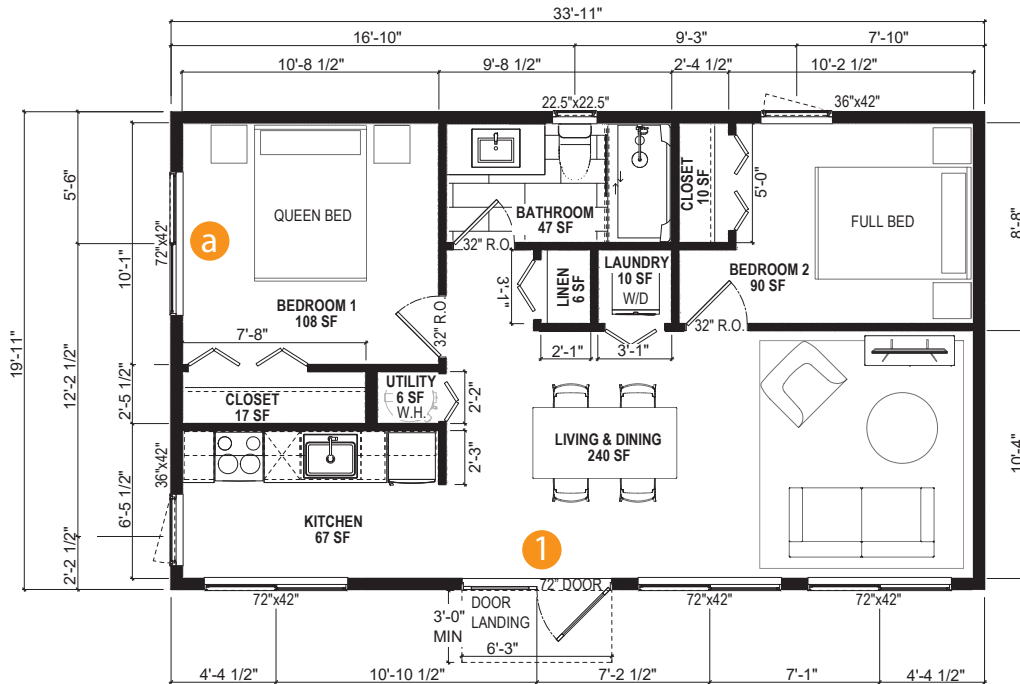
EAVE LENGTHS:

 FRONT = 24"
 SIDE = 6"
 BACK = 6"

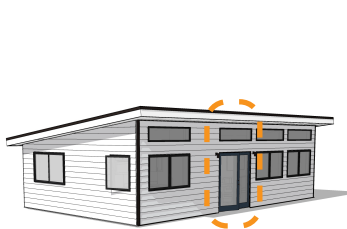
SHORTENED BACK AND SIDE EAVES
 RECOMMENDED FOR PLACEMENT NEAR REAR & SIDE SET-BACKS

C MODEL (C) TWO BEDROOM - (1)
 SCALE: 1/8" = 1'-0" (8.5x11 PAPER)

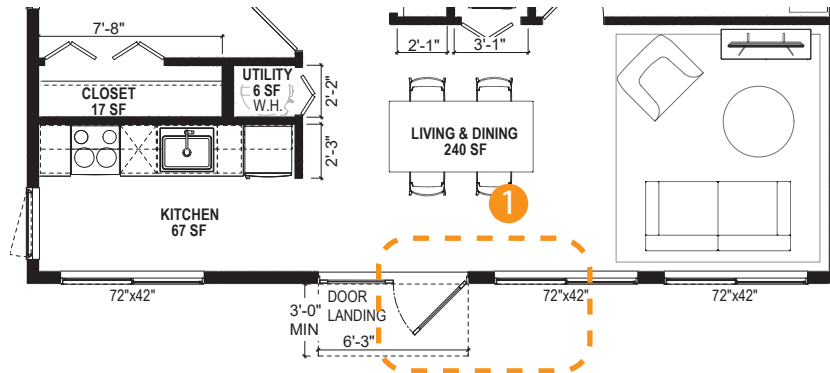
NOTE: Dimensions shown to framing and center of fenestration



SUMMIT 680 - MODEL C-1 - MAIN ENTRY



1 FRONT DOOR



SUMMIT 680 - MODEL C-1 - SLIDING DOOR OPTION



IF (1) Front Door selected window option in bedroom



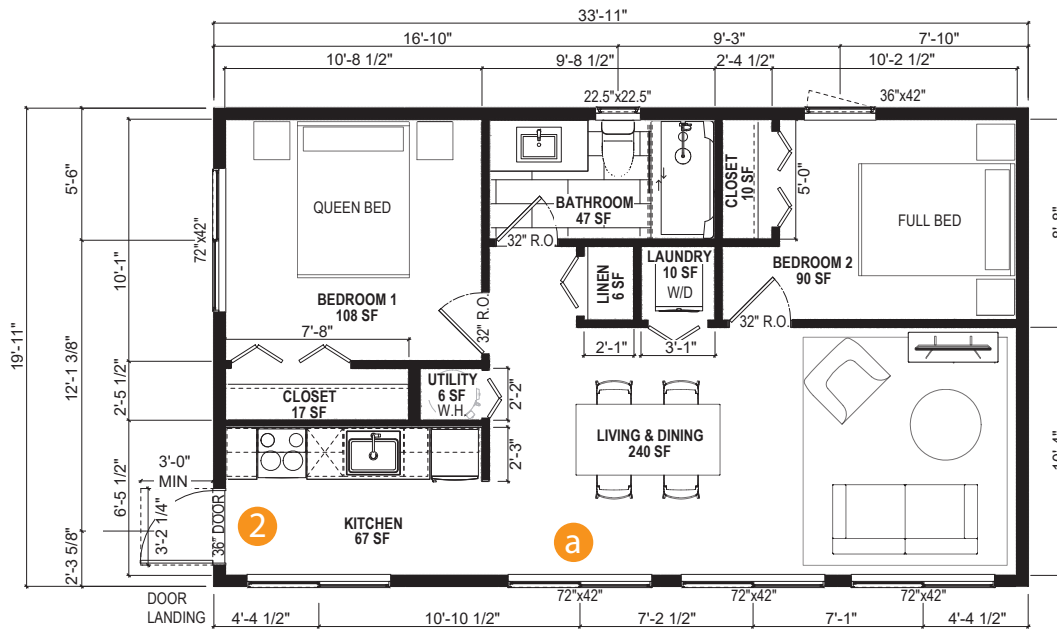
IF (1) Front Door selected slider door option in bedroom

a BEDROOM WINDOW

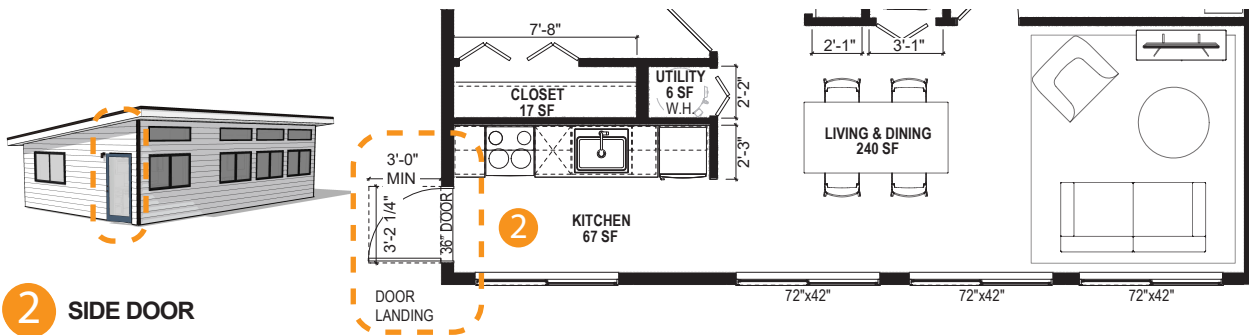
b BEDROOM SLIDER DOOR

C MODEL (C) TWO BEDROOM - (2)
 SCALE: 1/8" = 1'-0" (8.5x11 PAPER)

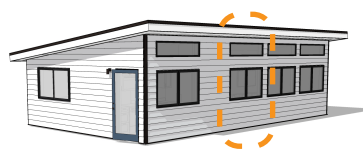
NOTE: Dimensions shown to framing and center of fenestration



SUMMIT 680 - MODEL C-2 - MAIN ENTRY



SUMMIT 680 - MODEL C-2 - SLIDING DOOR OPTION



IF (2) Side Door selected window option on front wall



IF (2) Side Door selected slider door option on front wall

a FRONT WINDOW

b FRONT SLIDER DOOR