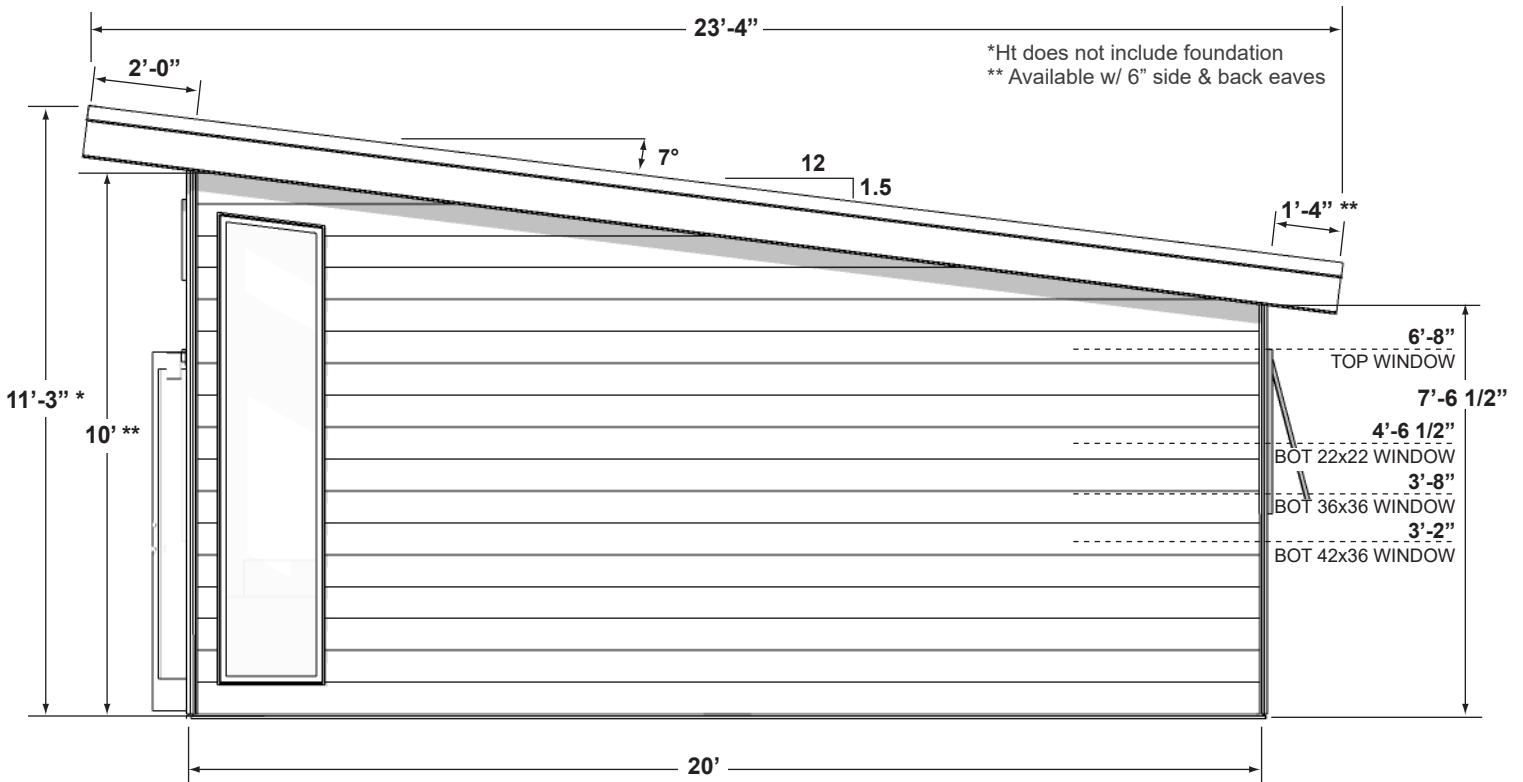
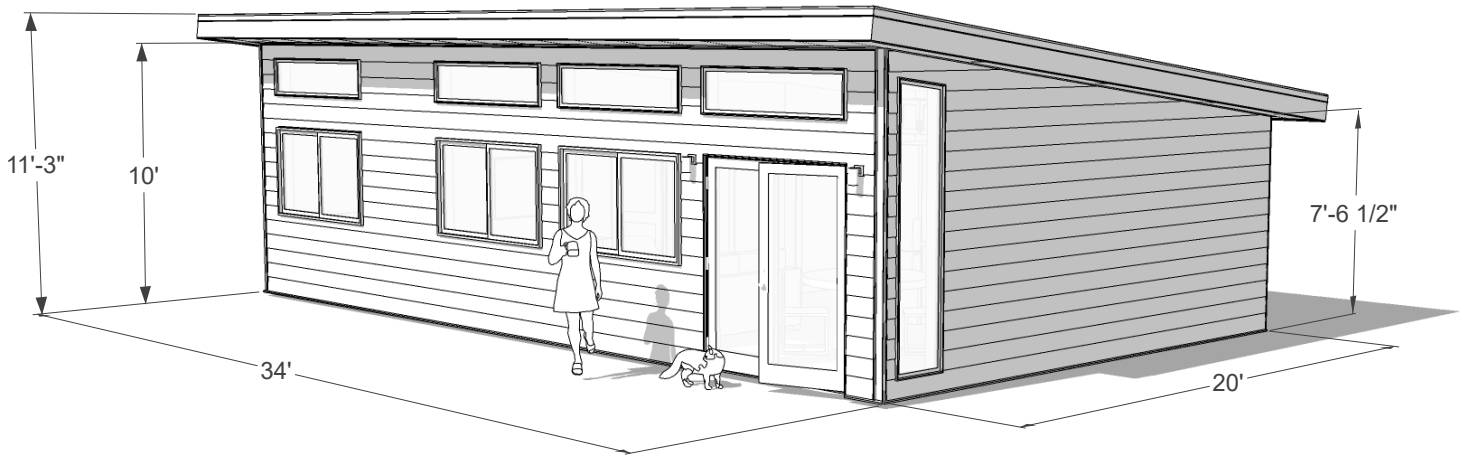
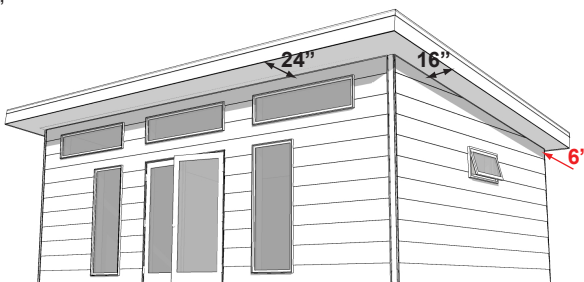


NOTE: All layouts available mirrored (left-right)


SUMMIT SERIES - ROOF UPGRADES
EAVE LENGTHS:

 FRONT = 24"
 SIDE = 16"
 BACK = 6"

SHORTENED BACK EAVES
 RECOMMENDED FOR PLACEMENT NEAR REAR SET-BACK

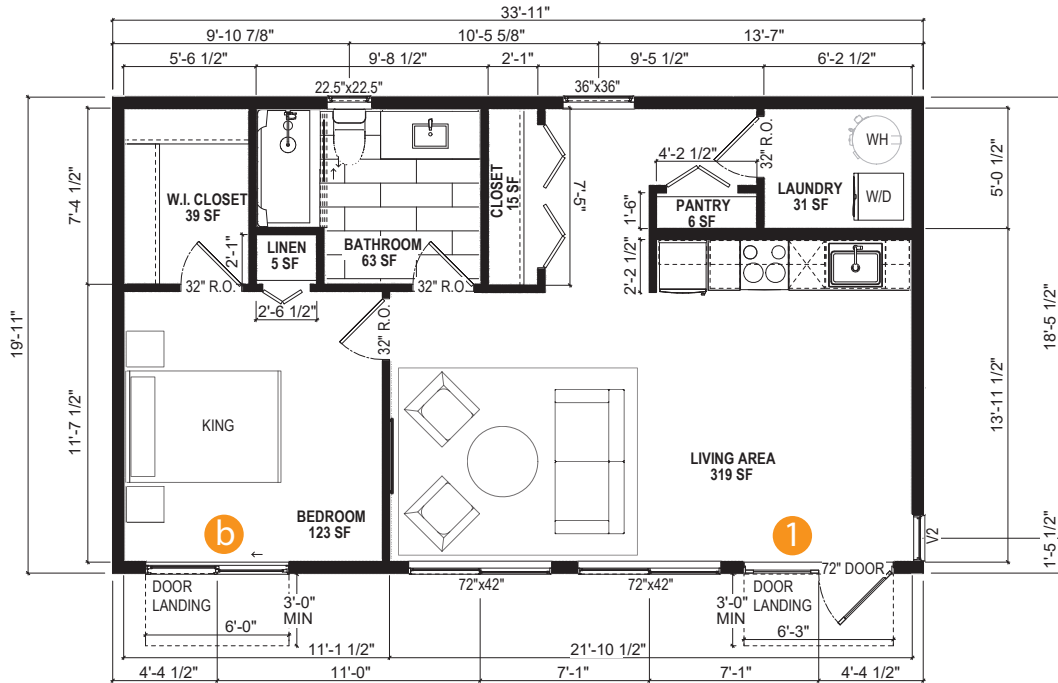
EAVE LENGTHS:

 FRONT = 24"
 SIDE = 6"
 BACK = 6"

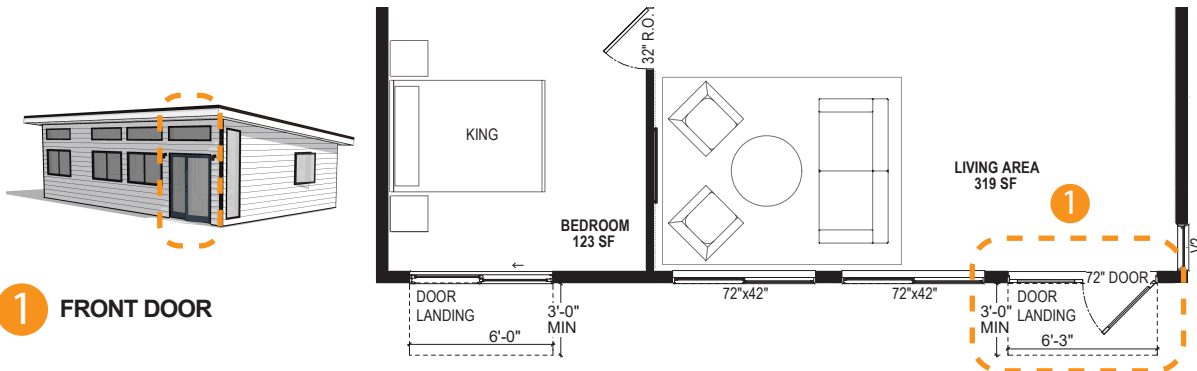
SHORTENED BACK AND SIDE EAVES
 RECOMMENDED FOR PLACEMENT NEAR REAR & SIDE SET-BACKS

B MODEL (B) MORE STORAGE - (1)
 SCALE: 1/8" = 1'-0" (8.5x11 PAPER)

NOTE: Dimensions shown to framing and center of fenestration



SUMMIT 680- MODEL B - 1 - MAIN ENTRY



1 FRONT DOOR

SUMMIT 680- MODEL B - 1 - SLIDING DOOR OPTION



IF (1) Front Door selected window option in bedroom



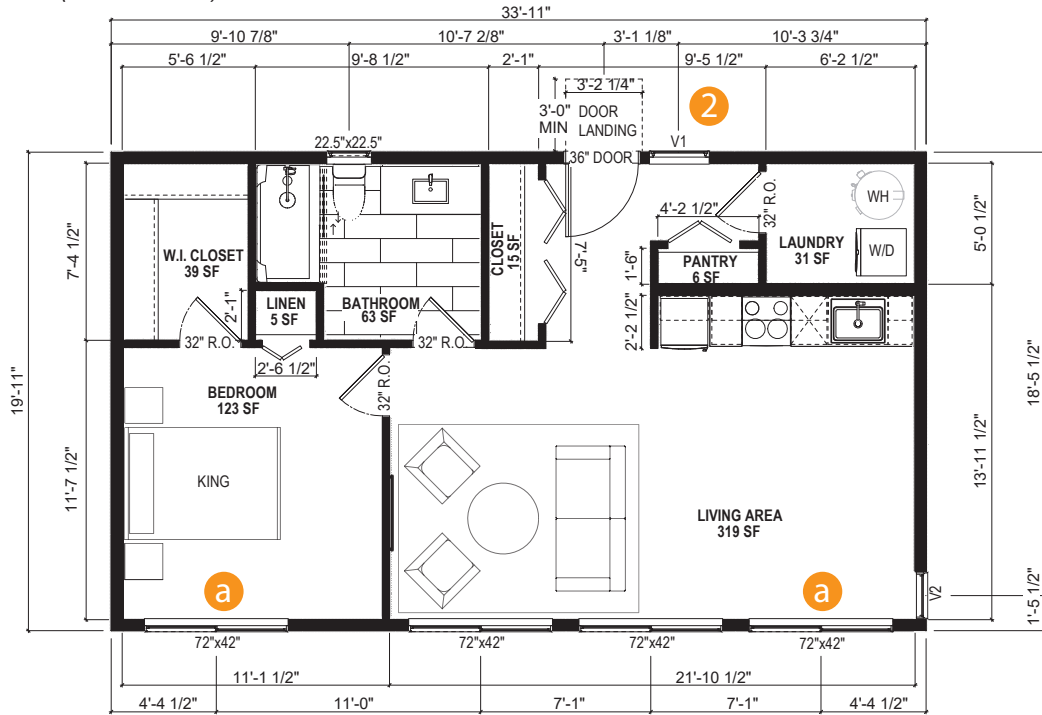
IF (1) Front Door selected slider door option in bedroom

a BEDROOM WINDOW

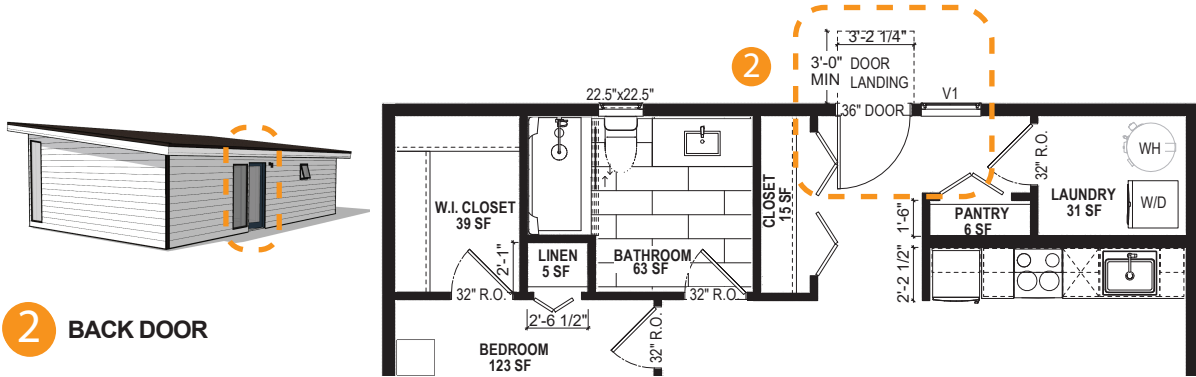
b BEDROOM SLIDER DOOR

B MODEL (B) MORE STORAGE - (2)
 SCALE: 1/8" = 1'-0" (8.5x11 PAPER)

NOTE: Dimensions shown to framing and center of fenestration

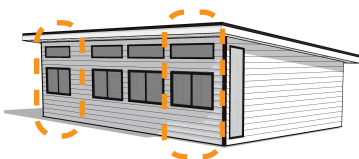


SUMMIT 680- MODEL B - 2 - MAIN ENTRY

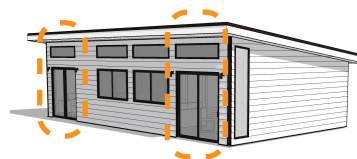


2 BACK DOOR

SUMMIT 680 - MODEL B - 2 - SLIDING DOOR OPTION



IF (2) Back Door selected window options are in bedrm & living rm.



IF (2) Back Door selected slider door options are in bedrm & living rm.

a FRONT WINDOWS

b SLIDER DOORS