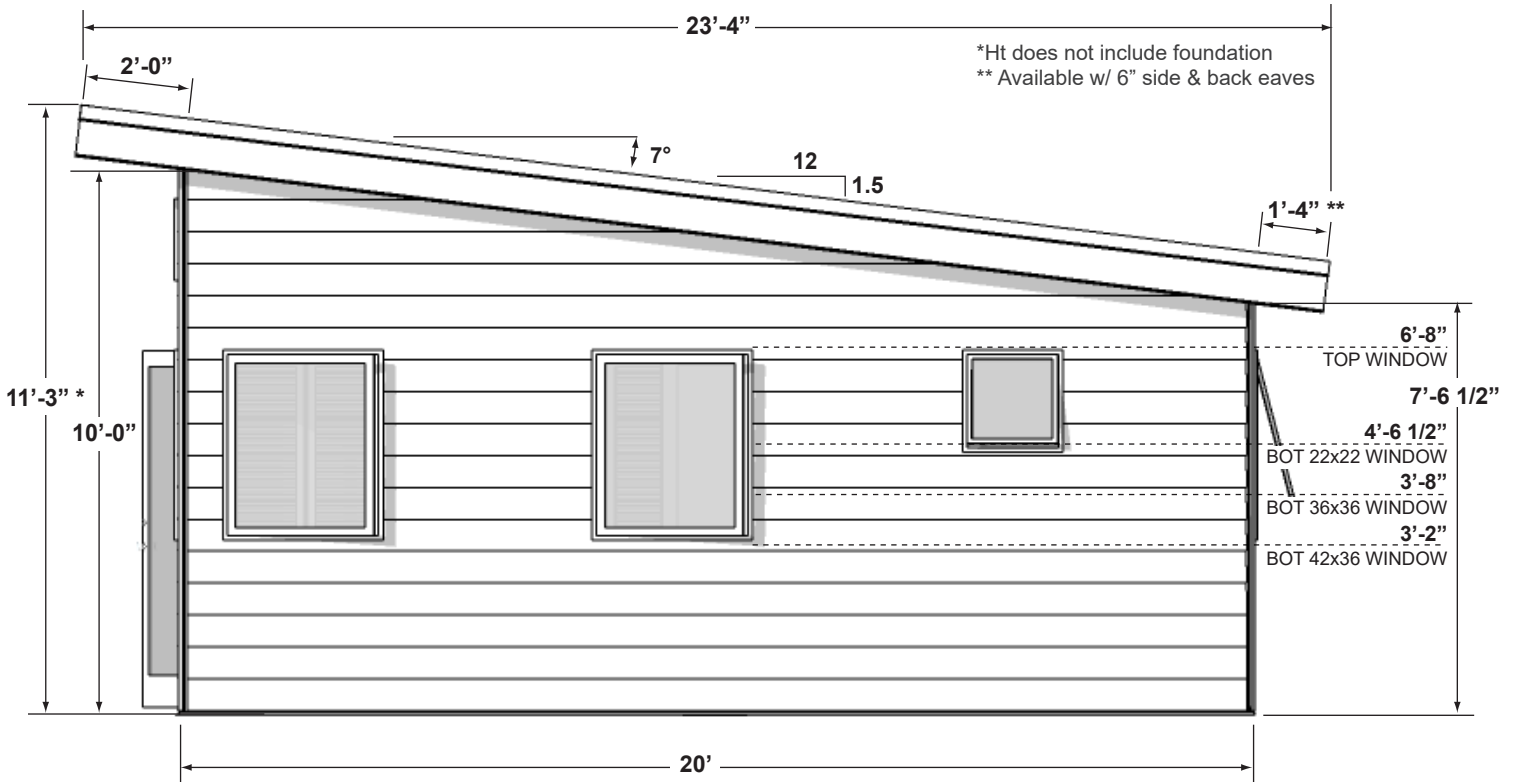
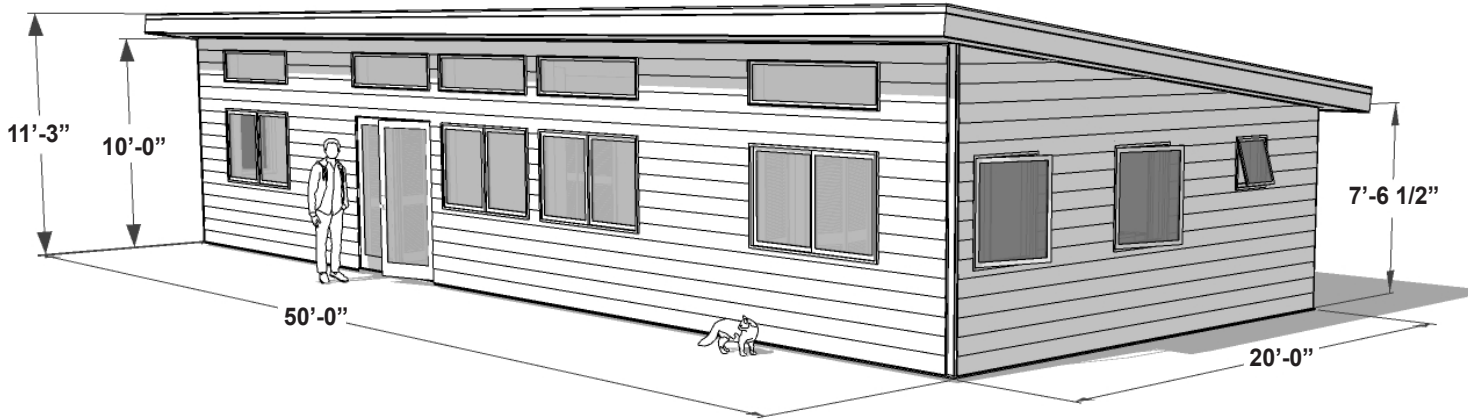


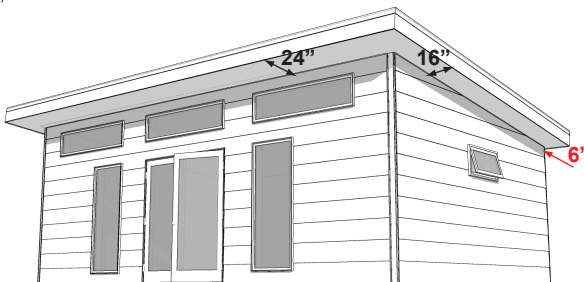
NOTE: All layouts available mirrored (left-right)



SUMMIT SERIES - ROOF UPGRADES

EAVE LENGTHS:

FRONT = 24"
 SIDE = 16"
 BACK = 6"



SHORTENED BACK EAVES
 RECOMMENDED FOR PLACEMENT NEAR REAR SET-BACK

EAVE LENGTHS:

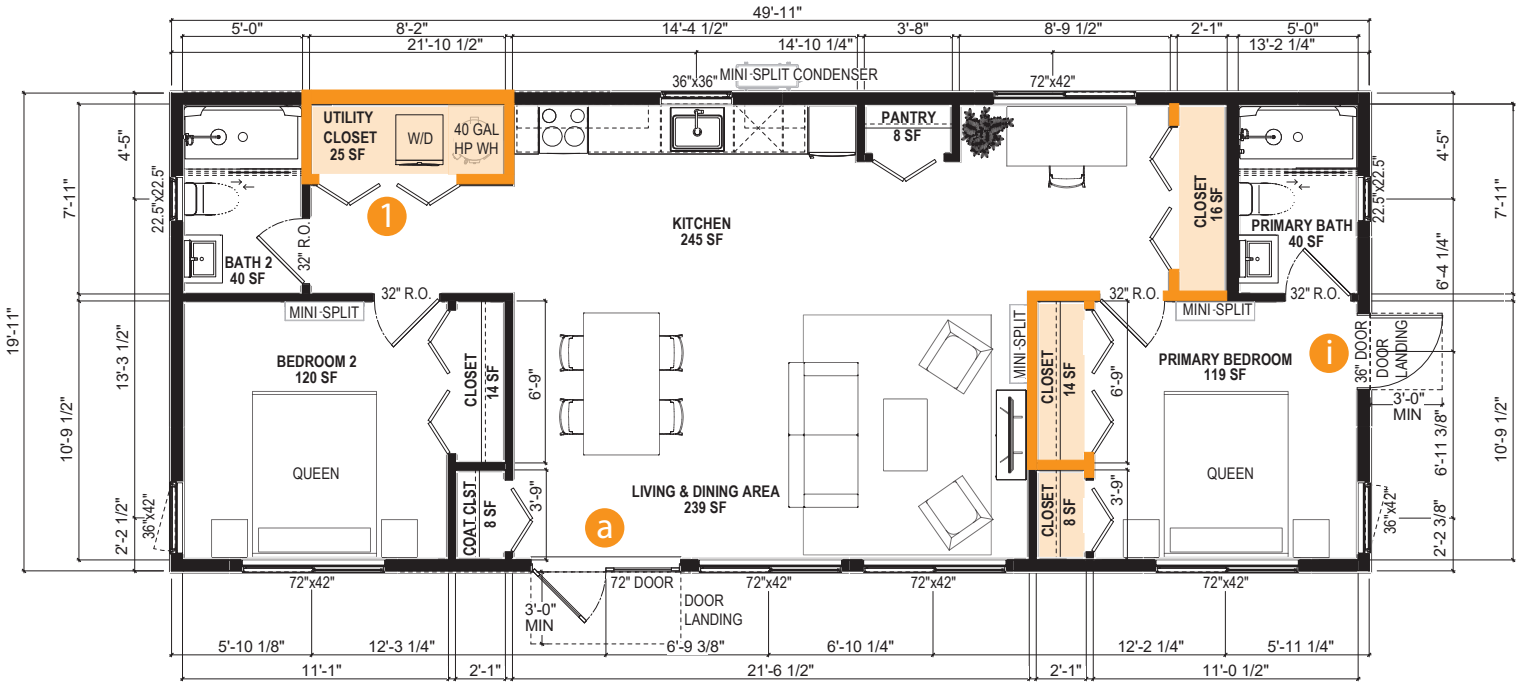
FRONT = 24"
 SIDE = 6"
 BACK = 6"



SHORTENED BACK AND SIDE EAVES
 RECOMMENDED FOR PLACEMENT NEAR REAR & SIDE SET-BACKS

1 MODEL (A) - FLOOR PLAN (1) MORE STORAGE
 SCALE: 1/8" = 1'-0" (8.5x11 PAPER)

NOTE: Dimensions shown to framing and center of fenestration



SUMMIT 1000 - A - BEDROOM OPTIONS

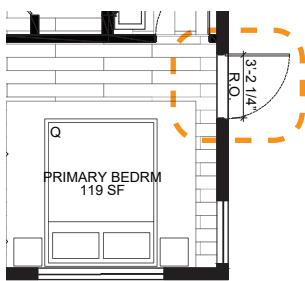
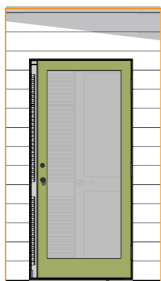


a DOUBLE DOOR - 72"

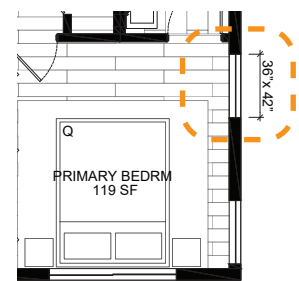
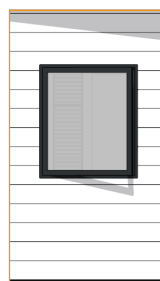


b SINGLE DOOR - 36"

SUMMIT 1000 - A - BEDROOM OPTIONS



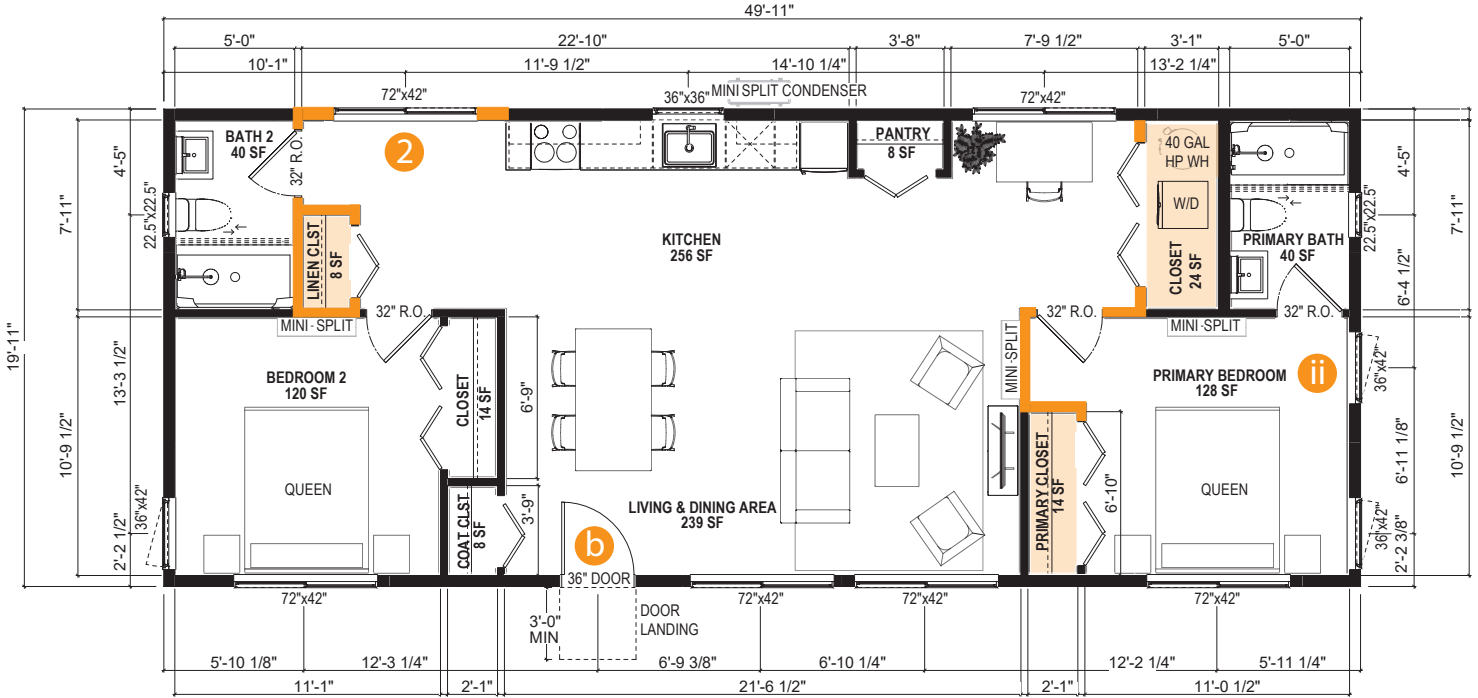
i BEDROOM DOOR



ii BEDROOM WINDOW

2 MODEL (A) - FLOOR PLAN (2) KITCHEN WINDOW
 SCALE: 1/8" = 1'-0" (8.5x11 PAPER)

NOTE: Dimensions shown to framing and center of fenestration



SUMMIT 1000 - A - BEDROOM OPTIONS

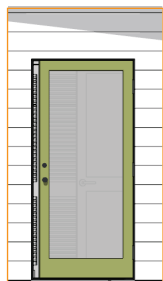


a DOUBLE DOOR - 72"

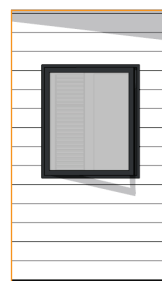
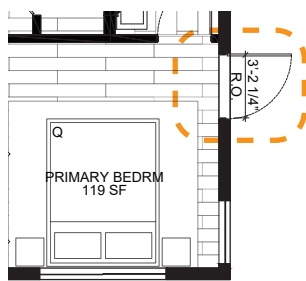


b SINGLE DOOR - 36"

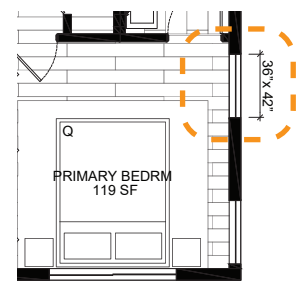
SUMMIT 1000 - A - BEDROOM OPTIONS



i BEDROOM DOOR

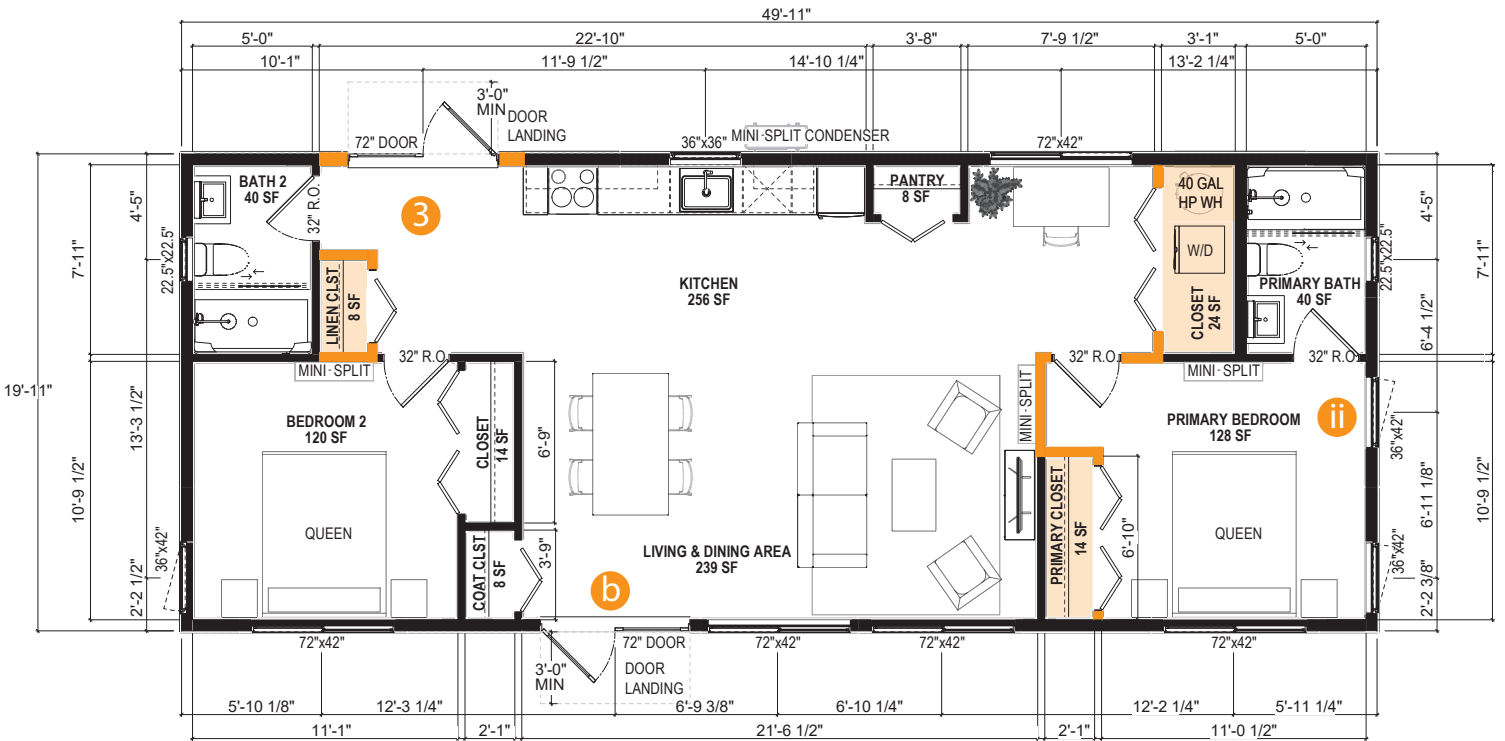


ii BEDROOM WINDOW



3 MODEL (A) - FLOOR PLAN (3) KITCHEN DOOR
SCALE: 1/8 = 1'-0" (8.5x11 PAPER)

NOTE: Dimensions shown to framing and center of fenestration



SUMMIT 1000 - A - BEDROOM OPTIONS

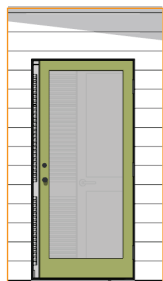


a DOUBLE DOOR - 72"

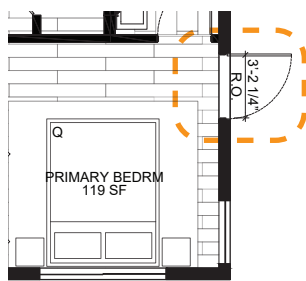


b SINGLE DOOR - 36"

SUMMIT 1000 - A - BEDROOM OPTIONS



i BEDROOM DOOR



ii BEDROOM WINDOW

